



# The Focus

A Monthly newsletter for the Members and Neighbors of  
**Our Redeemer Lutheran Church**

December, 2009

## Journey to Bethlehem

### An Outdoor Living Nativity

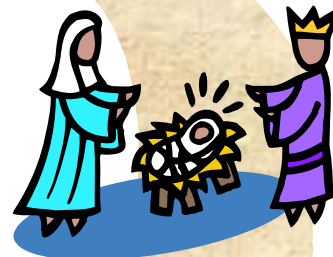
Saturday, December 5 6:00-8:30 PM  
Our Redeemer Lutheran Church

105 Gateshead Drive, McMurray  
Just off Rt. 19 in Peters Township, across from the Bob Evans Restaurant



Come and join Mary and Joseph on their journey to Bethlehem.

See the shepherds,  
listen to the prophets,  
take a look at Joseph's  
carpenter shop.



Go to the inn and then to the manger.

Stop at Herod's palace,  
and see the wise men as they search for the newborn king.

After your journey, come inside for hot chocolate, cookies,  
and a craft.



It's our Christmas gift to the community.  
**FREE AND OPEN TO EVERYONE**

For further information check our website [ourredeemer-peters.org](http://ourredeemer-peters.org)  
or call 724-941-7467

## LETTER FROM THE PASTOR

Dear Friends,

Advent at Our Redeemer is a time for sharing **FAITH, FAMILY, FRIENDSHIP** and **FOOD**.

Advent is the season each year when the church prepares for Christmas. We don't prepare with shopping for gifts at the mall or online. Instead, we delight in the gifts that God has already given us.

We celebrate **FAITH** each week in **Worship** as we hear the prophet's words about the coming of the Messiah, the Savior. As we light the **Advent Wreath** each week, we'll travel from Jerusalem to the hill country of Judah, then to Nazareth and on to Bethlehem. **Outside our Moving Nativity Scene** will once again journey closer to the manger each week. And on one special evening, Saturday, December 5, we will present an outdoor living nativity - "**Journey to Bethlehem**."

We celebrate **FAMILY** during Advent, beginning with our **Advent Soup Supper**. Start the season with a casual meal and conversation around the table on November 29. On Sunday, December 20, come to the table again for **Breakfast at the Manger**, then worship as a family in a service that involves even our youngest children.

We celebrate **FRIENDSHIP** during this season with our annual **Progressive Dinner**, a time to meet new friends and enjoy delicious food. The schedule has been adapted this year to allow more time for relaxed conversation and fellowship. This annual adult event has become an important tradition among us. Our **Cookie Exchange** is also a time to gather with old friends and make some new ones.

We celebrate with **FOOD** during Advent - food that comes attached to people - soup made for us by friends, a meal shared in a member's home, breakfast with the family. This is food that nourishes both body and soul. And that brings us full circle to where we began, in worship, where we are fed each week with holy food here in the family of faith.

Make some of these Advent opportunities part of your preparation for Christmas this year... they are a whole lot more rewarding than one more trip to the mall.

*Pastor Schmid*

### Christmas Eve Worship - Thursday, December 24

#### *4:30 P.M. Children's Service*

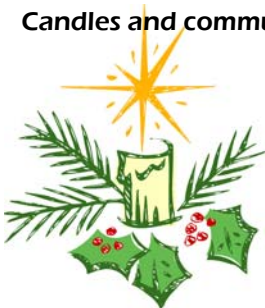
This brief service is designed for young children and their families. With songs and a retelling of the Christmas story, we celebrate the birth of Jesus. There will be communion at this service.

#### *7:00 P.M. Family Service*

Candles, communion and carols - this is a full worship service with special music by our Children's and Adult Choirs. There will be a children's sermon in addition to the sermon at this service.

#### *11:00 P.M. Candlelight Service*

Candles and communion, the Chancel Choir and carols - this late service ushers in Christmas Day in a beautiful way.



December 26/27 - Service of Lessons and Carols

## JOURNEY TO BETHLEHEM ON DECEMBER 5, 6:00-8:30 pm



The outdoor live nativity Journey to Bethlehem is only a few weeks away! We've got most of our costumes, set designs and props prepared, but we need you to make the evening complete! Take a look at the schematic and costumes posted on the Sunday school bulletin board in the social hall to see the various scenes and how they will appear in the church's upper parking lot. We also have a sign-up sheet on the church bulletin board. Since the Journey will be open to the public as well as the congregation, we need plenty of volunteers dressed in costume to fill the streets of Bethlehem, and also to guide people along their Journey.

If you have old blankets, curtains, tablecloths, or fabric you'd like to offer for costumes, please leave them on the table in the social hall, under the Sunday school bulletin board. We can also use your leftover bales of hay and corn stalks. Please put them in the grassy area on the left side of the shed in the upper parking lot.

Our last minute production evening is December 3, 6:00 pm in the social hall, where we will finish making costumes, set up scenes and props, and prepare luminaries and lighting. Join us for pizza, beverages and work! Contact Suzanne Kennedy at 724 942 3853 or [pipermoran@comcast.net](mailto:pipermoran@comcast.net) for more information.

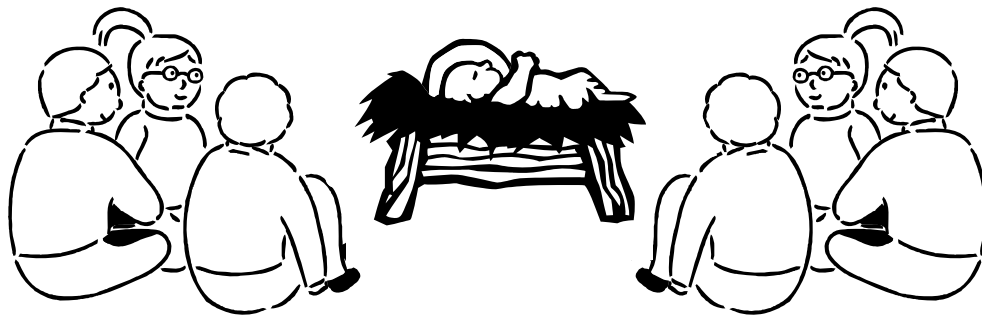


*Instead of taking pictures of your children with Santa for your Christmas cards this year, consider getting a shot of your children with wise men, or shepherds, or Mary and Joseph. "Journey to Bethlehem" will provide ample opportunity for wonderful pictures. Just remember to set your camera for "night".*

## BREAKFAST at the MANGER

This is one of our longest running traditions, and an alternative to Breakfast with Santa. Come and enjoy a good breakfast with your family and friends at 9:15 on Sunday, December 20. Hear the Christmas story in a new way. Sing some songs, and make an item that will be a part of our church's Christmas celebration. Plan on staying for worship at 10:45, when we'll start the process of preparing the church for Christmas in a very family friendly, participatory service.

Breakfast at the Manger is for all ages, individuals and families alike. Sign up on the bulletin board.



The Char Val Singers, under the direction of Mary Helen Barr and accompanied by Terry Divelbliss, will perform at Our Redeemer on Sunday, December 13 at 3:00 PM. Tickets are \$8 each and can be purchased from Mary Helen or at the door.

Our Redeemer's Chancel Choir members Martha Robb, Randy Stonemark and Althea Seese are also members of the Char Val Singers.

# WORSHIP

## Christmas Choir Rehearsal Schedule

A Children's Choir (grades 1-6) is being formed to sing at the 7:00 PM service on Christmas Eve. See the choir schedule below. (If older youth would like to participate musically see Mary Helen after worship or contact her by email. Her email is barrmhba@aol.com.)

- Monday, November 30, Children's Choir, 6:00-6:45 PM
- Wednesday, December 2, Chancel Choir, 7:00 PM
- Monday, December 7, Children's Choir, 6:00-6:45 PM
- Wednesday, December 9, Chancel Choir, 7:00 PM
- Monday, December 14, Children's Choir, 6:00-6:45 PM, Chancel Choir, 7:00 PM
- Monday, December 21, Children's, 6:00-6:45 PM
- Wednesday, December 23, Chancel Choir, 7:00 PM



## December Sunday (and Christmas Eve) Readings

- December 6 - Malachi 3:1-4; Luke 1:68-79; Philippians 1:3-11; Luke 3:1-6
- December 13 - Zephaniah 3:14-20; Isaiah 12:2-6; Philippians 4:4-7; Luke 3:7-18
- December 20 - Micah 5:2-5a; Luke 1:46b-55; Hebrews 10:5-10; Luke 1:39-45 [46-55]
- December 24 - Isaiah 9:2-7; Psalm 96; Titus 2:11-14; Luke 2:1-14 [15-20]
- December 27 - 1 Samuel 2:18-20, 26; Psalm 148; Colossians 3:12-17; Luke 2:41-52

## Communion

We offer communion wafers for those with food sensitivities. They are gluten-free, dairy-free, wheat-free and corn-free. When you come forward to receive Holy Communion, let the pastor know that you require a gluten-free wafer. We also offer white grape juice instead of wine. This juice is consecrated with the wine and is available from the ushers.

## Joyful Noise Worship Service

Joyful Noise Worship Service for families with children on the autism spectrum continues to be held on the second Sunday of the month. Our next service will be on Sunday, December 13 at 1:00 p.m.

# Poinsettia plants to decorate the church for our Christmas Eve worship services

Name \_\_\_\_\_  
As you wish your name to appear in the bulletin

Phone Number \_\_\_\_\_

Number of Red Poinsettias (donation-\$6.50 per plant): \_\_\_\_\_

Given in memory of / honor of / celebration of (please circle one):

\_\_\_\_\_  
Print clearly



Please drop this form, along with your donation, in an envelope and mail it to the church office or drop it in the collection plate. If you have any questions, call the church office at 724-941-7467. **DEADLINE: December 13.**

# WORSHIP

## **All Saints Day Dedication 2009**

*It is appropriate that on All Saints Day we dedicated worship furnishings which had been provided since last All Saints Day. (We gave thanks for the Gifts and Memorials given for Landscaping as part of our Celebration of Creation on St. Francis' Day, October 4, 2009.)*

**White Paraments** given in memory of Pam Herring Cooper

+

**Baptismal Ewer** given in memory of James Johnston

+

**Crystal Wine Flagon** given in honor of Terry and Barbara Divelbliss' 45th wedding anniversary

+

**Communion Linens** given in memory of Patricia Matties and Tom Maynard

+

**Banner Stand** given in memory of Lildae Crusan, Paul Widmer, Jim Pope, Regis Layhew and Ella Lessick

+

**Evangelical Lutheran Worship Books** given in memory of Richard Morris and Dena Yarussi

# STEWARDSHIP

## **Financial Stewardship Update**

<b>Current Operating Expenses</b> <i>(includes the interest portion of the mortgage payment)</i>	<b>Actual Income</b>	<b>Actual Expense</b>	<b>Financial Position</b>	<b>Budgeted Expense</b>
October 2009	\$37,829	\$30,963	\$6,865	\$35,135
Year to Date	\$316,429	\$334,854	(\$18,425)	\$351,205
<b>Additional Outreach Offerings</b>	<b>October</b>	<b>Year to Date</b>		
India Health Center	\$172	\$2,542		
World Hunger	\$250	\$2,671		
Habitat for Humanity	\$0	\$0		
Food Pantry + CROP Walk	\$0	\$917		
Endowment	\$0	\$500		
Darfur	\$0	\$0		
Lutheran World Relief	\$0	\$150		
<b>Building Fund</b> <i>(used to pay the principal portion of the mortgage payment)</i>	<b>Collected</b>	<b>Payment</b>	<b>Financial Position</b>	
October	\$2,833	\$2,983	(\$150)	
Year to Date	\$27,857	\$29,954	(\$2,097)	
Balance in Building Fund Savings	\$35,570			

## **Annual Congregational Meeting - Sunday, January 31**

All confirmed members are encouraged to attend this important annual meeting. Business on the agenda is election of council members and approval of the 2010 budget. We will begin with one worship service at 10:00, followed by a spaghetti lunch and then the meeting. Watch for sign-up sheets after January 1.

## YOUTH



### **First Fridays** December 4, 6:30-8:00 PM

Come and join in the fun, a night full of pizza, play and prayer for all our Kindergarten – Second Grade kids. We start with cheese pizza and talk about life and school and friends, we go outside to play, we talk about a story from the Bible, and we run out of time before we get to do everything that we want to. Parents, sign up on the bulletin board in the narthex by November 29.

### **3rd-6th Grade Youth Retreat**

December 11-12  
7:00 PM Friday to 10:00 AM Saturday

Can you believe that it's time for another 3<sup>rd</sup>-6<sup>th</sup> grade youth retreat? We will be staying overnight at the church from Friday, December 11 through Saturday, December 12. You'll want to bring a pillow, sleeping bag or blankets, toothbrush, toothpaste, your Bible, and a snack to share. Sign up on the bulletin board in the narthex by Sunday, December 6.

### **Crossroads**

December 6, 6:30- 8:30 PM

### **First Night, Anyone?**

You've seen it on TV, but you should see it in person! This is your chance to greet the New Year with your feet on the streets of Pittsburgh. Pastor Broome would like to take Senior High kids, grades 9-12, (and a few adults) along to First Night, Pittsburgh's New Year's Eve celebration. If you are interested, sign up on the bulletin board by Sunday, December 27. The festivities end with a live concert at Gateway Center which includes the countdown at midnight and spectacular fireworks.

All you have to do is sign up at the church, and get your First Night button, which is your admission ticket, from Giant Eagle for \$8. And you'll probably want to find your best cold-weather clothing. We will take the T downtown and back again, so plan to bring a few dollars for your fare. More details will be posted as we get closer to New Year's Eve.

## EDUCATION

### **Inquirer's Class**

Interested in joining Our Redeemer? There will be an Inquirer's Class on Saturday, December 5 from 9:00 AM - 12:00 noon. This is an opportunity for anyone interested in membership at Our Redeemer to come and learn more about the Lutheran faith, our church and its history. Please register with the church office by calling 724-941-7467 or sending an email to orlc@comcast.net by December 2. Childcare will be made available upon request.

## FELLOWSHIP

### **Advent Soup Supper**

Sunday, November 29, 5:30-7:00 PM

The Fellowship Committee invites you to join us for a dinner of soups, breads and desserts. We encourage friends and members to make a pot of soup, bring it to the church Fellowship Hall in a crock-pot (or something similar), hot and ready to serve between 5:00 and 5:25 on Sunday, November 29. If you are a soup "eater," bring your appetite (and a donation of bread or dessert, cut and ready to serve) and join us anytime between 5:30 and 7:00. A sign up sheet has been posted on the bulletin board.

### **Christmas Cookie Exchange**

Bring six dozen of your favorite Christmas cookie, along with the recipe, to the church social hall on Thursday, December 17. We will enjoy tasting and tea at 7:00 PM with the cookie exchange beginning at 7:30. Please sign up in the church narthex.

### **Christmas Progressive Dinner**

Friday, December 18

Include your friends from church in your holiday gatherings by joining us for our annual Christmas Progressive Dinner. The plan is for everyone to meet at one home for appetizers and then progress to individual homes for dinner and dessert. (4 or 5 couples per home) We need the participation of several hostesses for the dinner, and everyone will be contributing food, either for appetizers or a portion of the dinner. The menu is sherried beef over rice, green beans, salad and dessert. The cost per person is \$10. A sign-up sheet has been posted in the narthex. If you have any questions, please contact Mavis Herring at 724-941-5911.

**Faithful Filmgoers will not meet in December!**

# SERVICE & SOCIAL MINISTRY

## IHN

The next time we will work with Trinity Methodist and the Interfaith Hospitality Network to host those who are temporarily without homes is Monday, December 14. A sign-up sheet has been posted on the church bulletin board. Please let us know how you can help.

### Food Pantry News

The Peters Township Food Pantry coordinators would like to thank everyone for their generosity and continued support of the food pantry. The next distribution will be on Friday, December 4 at **Our Redeemer Lutheran Church**. This will be a combined December-January distribution, so it is our hope that the amount of food available will be twice as much as normal. Please bring your non-perishable food donations to the church. Also needed, in addition to food, are laundry products, toiletries and paper products. Thank you in advance for your generosity. Volunteers are also needed. If you can help, please go to Our Redeemer Lutheran Church at 3:30 p.m. on Thursday, December 3 for set-up or at 8:30 a.m. on Friday, December 4 to assist with distribution. To register to receive food from the Food Pantry, please call 724-942-0594 by the first of the month. Do not call Our Redeemer Lutheran Church.

### Washington City Mission

Meals for the Washington City Mission will now be accepted at any time of the year. Plans, lids and recipes can be found on the windowsill in the narthex. Prepare a meal (your recipe or ours) and return it to the church's freezer. Our volunteers will then deliver them to the mission where they will be heated and served to the homeless, poor and needy of Western Pennsylvania. Per the Mission's website, 10,148 meals were served in September. As you can see, the need is great!

### Interfaith Hospitality Network (IHN) Workday... Thank You

Thank you to the following who volunteered for the IHN workday on November 14, Carol Brandyberry and her neighbors Wes Lutz and Jeff Sheldon, Maegan Kern and Martha Rhone. Furniture was moved, old carpet removed, and the area cleaned up so that a portion of the wall at the Family Center in Washington can be repaired. They expect to have a brand new room by the end of the week. And a special thanks to Max Rush, who scoped out the project ahead of time and directed the volunteers in what needed to be done and how to go about it. Thanks again.

## Investing in Fair Trade

Green America is the nation's #1 educator on Fair Trade. They are working to shut down the world's sweatshops and promote fair trading solutions that work for all people and our planet. An economy is not green if it's not just!

People buying Fair Trade here in the U.S. give people around the world a chance to earn a living wage, send their children to school and build schools and clinics in communities.

In honor of Fair Trade month, here are a few of this year's big-impact initiatives and the ambitious agenda to grow the Fair Trade movement in 2010.

- Families in cities across America joined to educate their neighbors about the power of Fair Trade through the Halloween 'Reverse Trick-or-Treat' campaign, in partnership with Global Exchange. Children handed out Fair Trade chocolate and information on child labor in the chocolate industry to over 500,000 families, as they went door-to-door.
- A new edition of *Guide to Fair Trade* was published—and it flew off the shelves as over 300,000 students, community activists, and faith congregations used it to educate their communities about Fair Trade. (Please check our church library to discover this resource.)

Investing in a Fair Trade future means ensuring people along every step of the supply chain receive fair wages, that workers and communities are treated with dignity, and that artisans and producers take steps to preserve the environment.

Please check the credenza in our narthex to purchase Fair Trade items including coffee, tea, hot chocolate, chocolate bars, chocolate advent calendars, almonds and cranberries.

### Angel Tree Gifts

Our Redeemer Lutheran Church is providing Christmas gifts to the children at Glade Run Lutheran Services again this year. Tags are available from the bulletin board in the church narthex. All gifts are to be returned in a gift bag with tag attached by December 6. Do not wrap the gifts.

# GREEN TEAM

## Opportunity for Recycling Provided at Our Redeemer

In addition to the Abitibi bin in the parking lot and the paper recycling bin outside the office door, Our Redeemer Lutheran Church and Noah's Ark Preschool are working to reduce trash by recycling all plastics (#1 - #7), metal and glass that are used by staff and church groups. Watch for the bin to be placed in the kitchen or social hall marked with the Peters Township Recycling sticker. Please note that styrofoam cups #6, the clear plastic cups and the translucent cups are recyclable as well. All plastics that are recycled should have the recycle symbol on them.

On December 6 a recycling project will be introduced to the Sunday School children about recycling scrap aluminum including pop cans and foil pans. This will not be done on an ongoing basis, but will be done at intervals throughout the year. Watch for more information on the flyer that your children and youth will receive.

### REMEMBER TO KEEP A GREEN CHRISTMAS

- Reuse wrapping paper - when it needs to be disposed of please place it in the Abitibi bin.
- Save money and trees by wrapping presents with what's around the house -newspaper, fabric, magazines, even maps. According to the nonprofit environmental action group informinc.org, if each household in the U.S. recycled wrapping on three (3) presents, the paper saved would cover 45,000 football fields. (Family Circle, Dec. 2009, p.22)
- Switch to LED Christmas lighting to reduce energy use with your Christmas lighting.
- Send more e-cards to reduce the use of paper - it also has the benefit of saving postage.
- Purchase Fair Trade products from 10,000 Villages to support justice in the market place.
- Recycle your live Christmas tree! Peters Township and Upper St. Clair gather live Christmas trees for producing mulch. Please take your tree to the designated place in your township. (Those who live in Canonsburg Borough, North Strabane and South Fayette may wish to suggest to your public works department that making mulch from trees is better than placing them in landfills.)

### FIVE THINGS YOU SHOULD ALWAYS BUY GREEN

1. Paint - low or no-VOC paint;
2. Paper products with a high post-consumer recycled content;
3. Compact fluorescent light bulbs;
4. Appliances with the Energy Star label;
5. Fruits and vegetables - choose organic, local, in-season produce.

### GREEN LIVING WEB RESOURCES

- [www.GreenAmericaToday.org](http://www.GreenAmericaToday.org)
- [www.greenpages.org](http://www.greenpages.org)
- [www.climateaction.org](http://www.climateaction.org)
- [www.fairtradeaction.org](http://www.fairtradeaction.org)
- [www.responsibleshopper.org](http://www.responsibleshopper.org)



### Email Issues Continue

The church office is still being advised that our Comcast emails are not getting through to all Verizon customers. We did some research on the Verizon website and found a possible solution. Please give this a try as quoted from the Verizon site:

If the sender is not receiving any bounceback message (we're not!), but you are still not receiving email from them, then it is getting flagged by SpamDetector. This can be disabled from "My Account" or "Account Tools", or you can add the e-mail addresses in question (orlc@comcast.net, pastorschmid@comcast.net, pastorbroome@comcast.net) to your safe list ("My Settings"> "Blocking" in webmail inbox) in order to bypass this filter. Also, make sure that emails detected as spam are being saved and not auto-deleted – this is done through a setting under "General" in the mail settings.

Thank you for working with us to resolve this issue.

---

## MEMBER NEWS

**Newly Baptized:**

We welcome the following children, received through the Sacrament of Baptism: August Phin Glover, son of Neil and Nicole, October 24; August Klink-Rajakumar, daughter of Vinod Rajakumar and Sacha Klink, November 1; and Tanner Lee Weiss, son of Chris and Joy, November 15. *Welcome Children of God!*

**New Arrival:**

Doug and Karen Meley are proud to announce the birth of their grandson, Evan Frank Meley. Evan was born on October 30 in Martinsburg, West Virginia. He was 6 pounds, 3 ounces and 19 1/2 inches long. Proud parents are Brian and Allison Meley. *Congratulations to all!*

**New address:**

Norm, Julia, Tyler and Tory Elliott  
12805 Rosalie Street  
Raleigh, NC 27614-7971  
*Best wishes to you in your new home!*

**Former Member:**

Joyce Lester died in Chicago on October 29. The funeral was November 2. She is survived by her husband, Frank, three children and several grandchildren.

---

## IN OUR PRAYERS

We lift up the following members of our congregation so that they may be strengthened by our prayers of intercession:

Bishop Kurt Kusserow, Gloria Beyer, Becky Casbon, Chad Grosso, Ruth Ann Lowery, Andrew Martin, Mary Lu Michell, Dorothy Worthington, Jeanne Zoellner and her mother and brother, Sue and Rick Hughes.

We remember those friends and family members who have asked for our prayers:

Peggy, Marissa, Sandi Babbie, Dave and Trudy Beistel, Ron Benson, Nygaire Bevan, Philip Blanock, Helen Bosak, Eloise Brown, Larry Clark, Louise Clutter, Jordan Davis, Sandie DeCesare, Joyce Donovan, Joan Dvorznak, Martin Evans, James Fadgen, Harold Fair, Michael Ferguson, George Ferko, Pastor Robert Fitzpatrick, Ken Flodine, Ann Furiga, Karen Gilleland, Connor Gjerde, Marge Gneiting, Susan Grau, Bud Grimm, Joan Handshue, Audrey Harris, Lance Harris, Keith Hay, Jackie Herchaft, Jeff Highfield, George Hildebrand, Karla Hilzendeger, David Howe IV, Ginny Howe, Julie Howe, Marcella Johnston, Tim Jones, Cindi Karoleski, Bill Kelly, Ellen Kerber, Carol King, Noni Lambert, Glen Lehman, Linda Leverknight, Anna-Cari Lindh, Lillian Lowery, Addison Marry, Amy May, Lori McCormack, Meleny Burik Myers, Julie Miller, Carolyn Moore, John Mull, Carl Munch, Andrew Novosedliak, Mark Ondrik, Austin Pitts, Ida Rattelman, Carole and Joe Reinhardt, Ralph Rhone, Harry Robol, Margaret Rorison, Mary Rudolph, Tony Russo, Brian Schill, Barbara Seaholm, Nathan Sipp, Kim Smith, Keith Snyder, Jim Sterner, John Szott, Tina Thielet, Gretchen Till, Dan Tovar, Joe Vidmar, George Walter, Ed and Loretta Warsow, William Werner, Patricia Wilhelm, Frank Yarussi, Carla Yohe, Judy Zabkar, Nate Zeller, Janet Zupancic and the congregation of St. Michael and All Angels' Lutheran Church in Spring Garden.

We pray for those who grieve:

Jarett and Jennifer Brown on the death of Jarett's brother, Kevin; and Susan Steffick on the death of her uncle, William McCullough.

We pray for the safety of those serving in our military:

Ron and Joyce Kilgore's grandson, Christopher Kilgore, serving with the Marines.

*If you would like to add someone to the prayer list, please submit your request in writing and place in the offering plate, give to the secretary, or submit by e-mail.*

# MINISTRY SCHEDULE/DECEMBER 2009

WORSHIP	December 6	December 13	December 20	Thursday, December 24	December 27					
	Second Sunday of Advent	Third Sunday of Advent	Fourth Sunday of Advent Breakfast at the Manger	Christmas Eve	Lessons and Carols					
	9:15 AM	9:15 AM	9:15 AM	4:30 PM	7:00 PM	11:00 PM	9:15 AM	10:45 AM		
Acolytes	M. Kingan N. Kingan	C. Davis E. Koerbel X	Amber Antle M. Meissner	X K. Nassar Travis Nassar	VOL. VOL. VOL.	J. Harakal T. Harakal	M. Kingan Casey Moran	Kyle Lance S. Pernisek	M. Mizikar Garrett Rush	
Lay Assistant	G. Hershberger	S. Ruppel	B. Pansino	K. Chupinka	Gary Millavec	T. Dibelbiss	VOL.	VOL.	X	
Lector	Sarah Barczak	B. Long	D. Navratil	Jeff Sofran	Scott Gaugler	Martha Robb	X	X	D. Fonzi C. Benedict	
Communion	C. Franceschini D. Hershberger	D. Brigger R. Brosky	L. Blanker J. Cekus	L. Barney P. Permar	C. Franceschini Mindy Hudson	Sue Gaugler Joyce Kilgore	VOL. VOL.	VOL. VOL.	P. Barczak Susan Loeser	
Assistants	Kelly Romero Paul Romero	R. Burk Julie Flynn	E. Kerber T. Miller	D. Stonemark R. Stonemark	Sohela Lunney Donna Miller	Ron Kilgore Nancy Till	VOL. VOL.	VOL. VOL.	C. Debowski Carl Ruppel Donna Miller D. Stonemark	
	X	X	X	X	X	X	X	X	R. Moordispaugh R. Stonemark	
Greeters	Amy & Dan Roy	R. Burk Julie Flynn	Whipple Family	Lisa Knell P. Permar	S. Dempster T. Zadach Conn	Nassar Family	VOL. VOL.	A. & G. Harakal	Moran/Kennedy Family	Zrowka Family Dayna & Diana Mizikar
Head Usher	Paul Prevade	D. Herring	Joel Beltz	Tim Knell	Tom Hudson	Frank Morelli	VOL.	VOL.	Mike Debowski	Max Rush
Ushers	Nichole Antle Nora Barczak	D. Davis M. Herring	C. Beltz F. Navratil	G. Chupinka M. Martin	Scott Gaugler Debra Miller	AJ Morelli F. Morelli	VOL. VOL.	VOL. VOL.	Drew Lance Karla Lance	Joe Waize Kim Waize
	Clint Langley	L. Rushin	L. Steffick	Doug Meley	Doug Miller	D. Zembrasky	VOL.	VOL.	B. Moordispaugh	R. McGoogan
Tellers (Head) (Council) (Assistant)		C. Brandyberry Sue Lambert C. Rajakumar		Carol Locher Sue Lambert C. Rajakumar		Barb Smith Sue Lambert D. Langley				C. Brandyberry Sue Lambert D. Langley
Altar Guild	Dawna Brigger & Becky Long		Marlene McGaffic & Jennifer Polasky		Carol Butler & Joyce Kilgore		VOL.	VOL.	Linda Blanker (following service)	Sally Ruppel, Chuck & Jessica Benedict
Coffee Hour Host/Hostess			Jared and Leslie Ciferno (Between services)							

Please send January schedule requests to the church office at [orlc@comcast.net](mailto:orlc@comcast.net) by December 15.  
If you are available to serve on Christmas Eve, please let us know. Thank you!

## NOAH'S ARK PRESCHOOL

At this time of year, in particular, I am reminded of the advice to live our lives in a state of daily gratitude. To make a list of what and whom we are grateful for seems like an overwhelming, yet, awesome task. We could begin with the colorful views that fall brings, the crispness of the air and the crunch of fresh apples (from Trax!). When I concentrate on the gratitude for my role at Noah's Ark, our families, children, staff and church members top the list.

As you know, the natural playground and NAEYC reaccreditation next year, are the priorities for our fundraising efforts. So many of you have stopped to share your thoughts on the playground site plan, marveling at the scope of its effect on everyone, young and old, current families as well as alumni. We are very grateful for your support in purchasing the coupon books and also the Sarris candy sale. Both of these efforts will give us an estimated \$2500 to add to the playground funds! Many of you are currently involved in the planning of "Christmas Around the World" on December 12 and the Dinner-Auction on March 27. I personally, am not a big fan of fundraising, but when the purpose is for the educational experiences of our preschoolers, I can deal with it and make it fun!

Several of our parents are involved in a grant-writing task force that has begun the process of obtaining grants from local foundations for the playground project. If you are interested or know of an organization that might fit out plan, let me know.

On November 18, five of our staff traveled to Washington, D.C. to attend the NAEYC (National Association for the Education of Young Children ) national conference. We are grateful that we are part of a preschool that values professional development and included that as a part of its budget.

Without a doubt, the greatest sense of gratitude is gained from the smiles, comments, interactions and relationships that we are privileged to share with the children and families we serve. As you share Thanksgiving traditions with those you love, we hope the experiences will reflect the gratitude you feel for all of God's blessings in your life.

With much gratitude for each of you,



Gerda Moul, Director, Noah's Ark Preschool

### Noah's Ark Preschool

*presents*

## Christmas Around the World

Saturday, December 12<sup>th</sup>, 10am-1pm

*in the social hall of*

Our Redeemer Lutheran Church

105 Gateshead Drive, McMurray, PA

Come travel around the world on a Christmas voyage with Noah's Ark...bring your family and friends to learn, experience and enjoy Christmas traditions and customs in other countries through song, storytelling, crafting, and more!

Children will travel together in small groups with a tour guide, and each child will receive a passport to be stamped with each country that he/she visits, as well as a carry-on bag to collect souvenirs. There will be refreshments, crafts, music, and lots and lots of holiday cheer!

Cost is \$5.00/Child (adults and children under 2 are free)

Be sure to bring your camera for special photos with St. Nicholas!

Registration forms are available in the church narthex or by contacting the preschool office at 724-942-6699.

OUR REDEEMER LUTHERAN CHURCH  
105 Gateshead Drive  
McMurray, PA 15317-3101



*Happy Thanksgiving!*

## OUR REDEEMER LUTHERAN CHURCH

105 Gateshead Drive  
McMurray, PA 15317-3101  
724-941-7467

### WORSHIP SERVICES

5:30 PM, SATURDAY  
9:15 and 10:45 AM, SUNDAY  
Childcare available at Sunday services

JOYFUL NOISE WORSHIP  
1:00 PM-2nd Sunday of the month

SUNDAY SCHOOL (Sept. - May)  
9:15 AM, All Ages

THE REV. DR. ANN SCHMID  
&  
THE REV. STEVEN E. BROOME, PASTORS  
724-941-7272 (home)

THE REV. JOHN F. YEDLICKA,  
PASTOR EMERITUS  
GERDA MOUL, DIRECTOR  
NOAH'S ARK PRESCHOOL  
724-942-6699

MARY HELEN BARR,  
MUSIC DIRECTOR  
412-833-0992 (home)  
ELAINE DOLCICH,  
OFFICE ADMINISTRATOR

Office 724-941-7467  
Fax 724-941-3262  
E-mail: [orlc@comcast.net](mailto:orlc@comcast.net)  
Website: <http://www.ourredeemer-peters.org>.

#### MISSION STATEMENT

"As Our Redeemer Lutheran Church is a community of people believing in Jesus Christ, our overall purpose is to worship, teach, serve, evangelize and witness to that belief."