

“A natural playground is filled with nature: plants, trees, flowers, water, dirt, sand, animals and insects. It promotes play that involves the whole child: gross motor, fine motor, senses, emotional and social interactions. Nurturing the love of nature develops through free access to a natural area and is essential to the emotional health of children. When children play in nature, they are more likely to have positive feelings about each other and the environment. The goal of an outdoor playground is to use the landscape and vegetation as the play setting and nature as the play materials.”

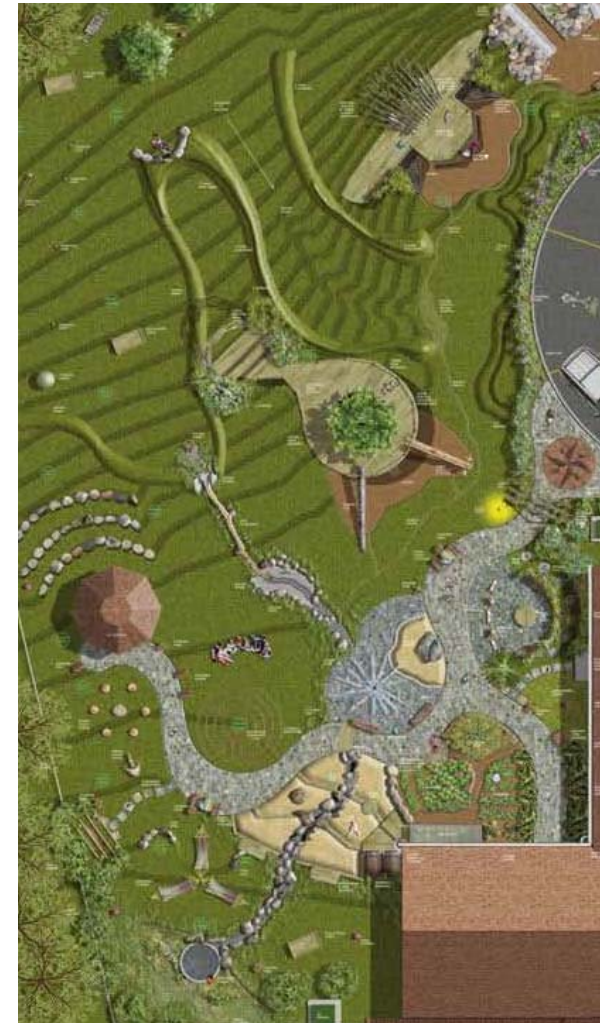
PROPOSAL

An early childhood play space and outdoor classroom to meet Pennsylvania Early Learning Standard, NAEYC performance criteria and environmental education for children of all abilities.

- **APPROACHES TO LEARNING**
 - * Learning using all senses
 - * Predict outcomes, observe, classify, compare
 - * Active participation in new experiences
- **CREATIVE ARTS**
 - * Variety visual art forms, movement and music
 - * Appreciation and imaginative play
- **LANGUAGE & LITERACY**
 - * Asking relevant questions
 - * Different forms of writing
 - * Phonological awareness
- **LOGICAL-MATHEMATICAL**
 - * Develop concepts of space & shape
 - * Measurement, represent & interpret data
 - * Reason, predict & problem-solve
- **PERSONAL-SOCIAL**
 - * Develop self concept, self-regulation
 - * Interactions: share, take turns, resolve, respond
- **PHYSICAL-HEALTH**
 - * Gross motor coordination
 - * Fine motor: eye-hand, spatial awareness, tools
 - * Growing and preparing healthy foods
 - * Appropriate risk taking
- **PROGRAM PARTNERSHIP**
 - * Project involves community participation
 - * Family participation in building & maintenance
- **SCIENCE**
 - * Inquiry, documentation, observation
 - * Use senses, simple machines, tools,
 - * Knowledge about earth
- **SOCIAL STUDIES**
 - * Spatial relation, sequence in growth
 - * How food is produced

PROPOSAL

A natural playground is an area where children of all abilities can interact and learn from experiences with natural elements.



Noah's Ark Preschool

Our Redeemer Lutheran Church
105 Gateshead Drive
McMurray, PA 15317
Phone: 724-942-6699
E-mail: noahspreschool@comcast.net

ENTRY LEVEL

- Handicapped Accessible Entrance
- Game Table
- Art Center with Easels
- Gardens
- Hot House (to allow year-round gardening)
- Underground Water System with Pump
- Water Play Fountain
- Sand Play
- Compost Barrels

LOWER LEVEL

- Birdhouses
- Fish Ponds
- Rain Garden (comes to life after a rain)
- Hammock Garden
- Game table
- Swing Chair
- Swing Bench

MID LEVEL

- Stump Story Circle
- Stone Amphitheater
- Gazebo
- Sensory Boxes
- Labyrinth
- Deck with railing
- Ladder to Deck
- Shiny Log
- Hang Log



Legend

1-Art Center

2-Gardens

3-Hot House

4-Sand Play

5--Fish Pond

6-Stone Amphitheater

7-Gazebo

8-Splash Deck

9-Sledding Hill

10-Musical Instruments

11-Cave

12-Slides

MID TO LOWER LEVEL

- Water Pump on Top
- Stone Funnel to Log Slide Way to Water Wheel and Splash Deck

UPPER LEVEL

- Water Slide/sledding hill/rolling hill
- Music: tongue drum, pedestal pipe
- Musical Fence
- Cave, Climbing Wall Deck
- Rock Climb
- Slides
- Balance Log Maze, Post Climb
- Rope Pull, Fallen Log Balance
- Weather Station
- Raspberry Patch
- Blueberries
- Biking